



Get Freedom with your Home Care Package!

- ✓ Low and Transparent Fees
- ✓ Choose your own Care Service Providers
- ✓ Maximum Value from your Home Care Package

What our clients say...

“It was so easy to get started with Let’s Get Care. I manage my own care services and get many more hours of care than I would have with a regular Provider. I couldn’t be happier with the service! Highly recommend.”

-Gina S

“Before switching to Let’s Get Care, I was being charged an obscene amount by my Approved Provider for poor customer service and very little care management! With Let’s Get Care I now receive almost double the hours in care services with the same Package. It’s a great service.”

-Linda G

“My daughter helps me with the hiring and scheduling of my care workers and I get many more hours of care than before. I recommend Let’s Get Care to anyone with a Home Care Package!”

-Henry H



Let's Get Care, a Revolution in Home Care Packages!

We are Australia's first government Approved Provider that exclusively offers self-managed care to Home Care Package holders.

Our mission is to give every Home Care Package holder full control of their care services and maximise the value of their government funding. We wanted to change the norm of exorbitant and unnecessary fees in the Home Care Package industry and that's exactly what we have done.

We are driven by value, fairness and excellence.

With Let's Get Care our clients take over the hiring and scheduling of their care service providers directly. No longer locked into using a traditional Approved Provider's staff, or high hourly rates, clients get access to the largest pool of support workers and care services in Australia, at the best rates around.

While clients enjoy their care services, Let's Get Care covers all of the necessary ongoing compliance and financial reconciliation which is a mandatory requirement by My Aged Care for Home Care Package holders.

Let's Get Care was founded by experienced aged care industry professionals with expertise in Home Care Packages. We offer our clients service excellence and peace of mind.

**Want to gain freedom with your Home Care Package?
Speak with a Care Expert today! Call 1300 497 442.**

Let's Get Care Works!

Here's how you can access complete freedom with your Home Care Package.

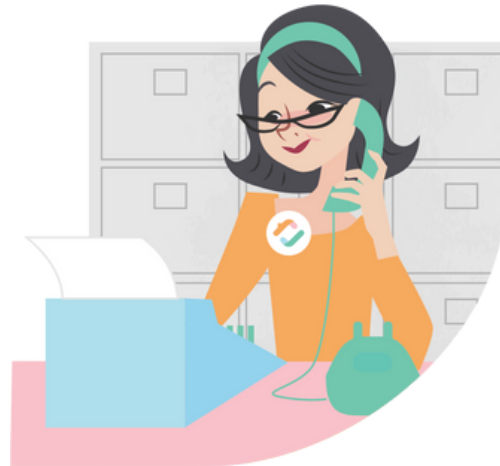


STEP 1

Sign up with Let's Get Care

To get started with Let's Get Care, simply call 1300 497 442 to arrange the sign up documents to be completed.

Once this is completed, you will be assigned a Care Manager who will create an Individual Care Plan and finalise any other necessary paperwork to start care services.



STEP 2

We Cover Ongoing Compliance and Financial Requirements

Let's Get Care covers all mandatory government compliance, financial reconciliation and monthly reporting which is a requirement of My Aged Care for Home Care Package holders.



STEP 3

You Hire & Schedule your Care Services

While we look after the necessary administration of your Home Care Package you can sit back and enjoy your services. With Let's Get Care you have the ability to hire the best care service providers at market rates.

If you need some help with your care management we are here for you.

Low and Transparent Fee

We charge low and transparent fees for both your care and package management.

Our fees cover preparing invoices and monthly statements, Care Management support, conduct quality improvement, compliance, and assurance activities, training and educating staff, reviewing your care plan and more!

Get more from your Package.

Also, with Let's Get Care, you are never locked into using a staff pool at over-the-top hourly rates which is a common practice amongst traditional Approved Providers.

With Let's Get Care you will minimise fees and maximise funds available for care services, which is really what your package was intended for!

To get low fees for quality support contact a Care Expert today on 1300 497 442.

Home Care Package Services

With Let's Get Care you have access to the largest pool of care service providers, whatever you require for your individual situation.



Meal Preparation

Nutrition, cooking and hydration needs.



Personal Assistance

Grooming, bathing, dressing, continence and mobility.



Social Outings and Support

Support and transport to attend appointments, go shopping and attend social functions.



Respite Care

Assisting family members to take a well deserved break when needed.



Companionship

Company to share moments with and speak to.



Cleaning

Tidying and cleaning for a happy home.



Laundry

Washing, drying, ironing and organising.



Gardening

Keep your garden beautiful with weeding, lawn mowing and pruning.



Clinical Care

Specialised healthcare services including nursing and podiatry.



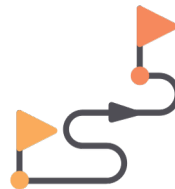
24 Hour Care

Round the clock care that includes sleepovers.



Maintaining the Home

Washing windows, clearing the gutters and other services as needed.



Other

Within government guidelines you can access any care services that your individual circumstance requires.



Medication Prompting

Ensuring the right medication is taken at the right time.

**To access Care Services just set up
a meeting with a Care Expert!**

Make an appointment today on 1300 497 442

SCHEDULE OF FEES

Home Care Package Fees effective 1 March 2025

Our fees for care management and package management are calculated as a fixed percentage of the total of the basic government subsidy allocated to your Home Care Package plus any supplements that you receive.

For example, if you are on a Level 1 Home Care Package and receive a dementia supplement, and the total amount provided by the government for your package and supplement is \$10,500 per year, our fee for care management and package management would be 10% of this amount, totalling \$1,050 per year.

The tables below outline our care management and package management fees, calculated based on the Aged Care Subsidies and Supplements rates (as applicable) published by the Department of Health and Aged Care, effective as of 1 January 2025.

The table below applies if you receive only the basic government subsidy. If you receive one or more supplements, we will add this amount to your subsidy and calculate your individual care management and package management fees. These fees will be clearly detailed in your personalised budget. We will ensure that your care management and package management fees remain below the pricing cap set by legislation.

Level 1 (15%)	Fortnightly	Annually
Basic HCP Government Subsidy	\$409.92	\$10,687.20
Care Management Fee (12%)	\$49.19	\$1,282.46
Package Management Fee (3%)	\$12.30	\$320.62
Funds Available	\$348.43	\$9,084.12
Level 2 (15%)	Fortnightly	Annually
Basic HCP Government Subsidy	\$720.86	\$18,793.85
Care Management Fee (12%)	\$86.50	\$2,255.26
Package Management Fee (3%)	\$21.63	\$563.82
Funds Available	\$612.73	\$15,974.77
Level 3 (15%)	Fortnightly	Annually
Basic HCP Government Subsidy	\$1,568.98	\$40,905.55
Care Management Fee (12%)	\$188.28	\$4,908.67
Package Management Fee (3%)	\$47.07	\$1,227.17
Funds Available	\$1,333.63	\$34,769.72
Level 4 (15%)	Fortnightly	Annually
Basic HCP Government Subsidy	\$2,378.60	\$62,013.50
Care Management Fee (12%)	\$285.43	\$7,441.62
Package Management Fee (3%)	\$71.36	\$1,860.41
Funds Available	\$2,021.81	\$52,711.48

We're here if you need us.

Call 1300 497 442

Updated January 2025

Additional Charges

Income Tested Fee	This fee is determined by Services Australia's assessment of your individual income. We are not able to waive this fee.
Interest Charges	If you are subject to an Income Tested Fee and you do not pay your contribution by the due date, interest may be charged on the outstanding amount in accordance with your Home Care Agreement. The rate of interest will be the current interest rate as published by the Reserve Bank of Australia (RBA).

Industry Average Service Rates

We operate under a brokered model, meaning the rates for your care services depend on the rates charged by the service providers you choose. To provide an indication of industry pricing, we have included in the table below the national median prices for common care services as published by the Department of Health and Aged Care. These prices are current as of 30 September 2024 and are subject to change.

	Standard Hours	Non-Standard Hours	Saturday	Sunday	Public Holidays
Personal Care	\$75	\$93.92	\$108	\$130	\$176.25
Nursing	\$127	\$150	\$175.61	\$214	\$261
Cleaning & Household Tasks	\$75	\$87	\$105	\$129.07	\$160
Light Gardening	\$79	\$90	\$106.25	\$133	\$162
In-Home Respite	\$75	\$88.50	\$105.93	\$130	\$160

Self-Managing: What's Included in the 15% combined fee?

At Let's Get Care our clients pay a combined 15% flat fee and self-manage their own care services. We sometimes get asked why we need to charge anything at all if the client self-manages the Home Care Package. It's a very good question.

Although our clients take over the day-to-day scheduling of their care services, there's a lot we do for the 15% fee on a client's behalf and it includes the following:



Care Managers to assist as needed.



Ongoing compliance measures required by My Aged Care.



Completion of necessary paperwork and initial onboarding process.



Set-up of service agreements with necessary police and insurance checks.



Paying all invoices and reimbursements in a timely and efficient manner.



24/7 online visibility of account balance and expenditures on Green Pencil.



An individualised Care Plan and Budget.



Completing paperwork and submission to My Aged Care for extra subsidies you may be entitled to.



Annual Care Plan review to ensure that your support services are current to your situation.



Ongoing training and development of our Care Management team.



Clinical Nursing team for the monitoring of health concerns and conditions.



The development of innovative technology and systems, i.e. telehealth check-ins.



Ensure your safety and security in line with the Royal Commission recommendations.



Supplier Portal to source workers from Australia's widest network of care.



Monthly Activity Statements.



Let's Get Care
A Revolution in Home Care Packages

**Still have questions?
Call us on 1300 497 442**

The washing can wait!

Speak with a Care Expert today
to get freedom and value from
your Home Care Package.

- ✓ Low and Transparent Fees
- ✓ Choose your own Care Service Providers
- ✓ Maximum Value from your Home Care Package